



NW3C CERTIFICATIONS

Recognizing your expertise in the field.



Certified Economic Crime Forensic Examiner

Investigate and analyze information related to financial conduct of all types and detect, respond to, and investigate illegal financial activity.



Certified Cyber Crime Examiner

Apply best practices in digital forensic techniques to image, document, and report on forensically sound digital evidence.



Certified Cyber Crime Investigator

Detect, respond to, and investigate cyber crimes and crimes facilitated by online communication.



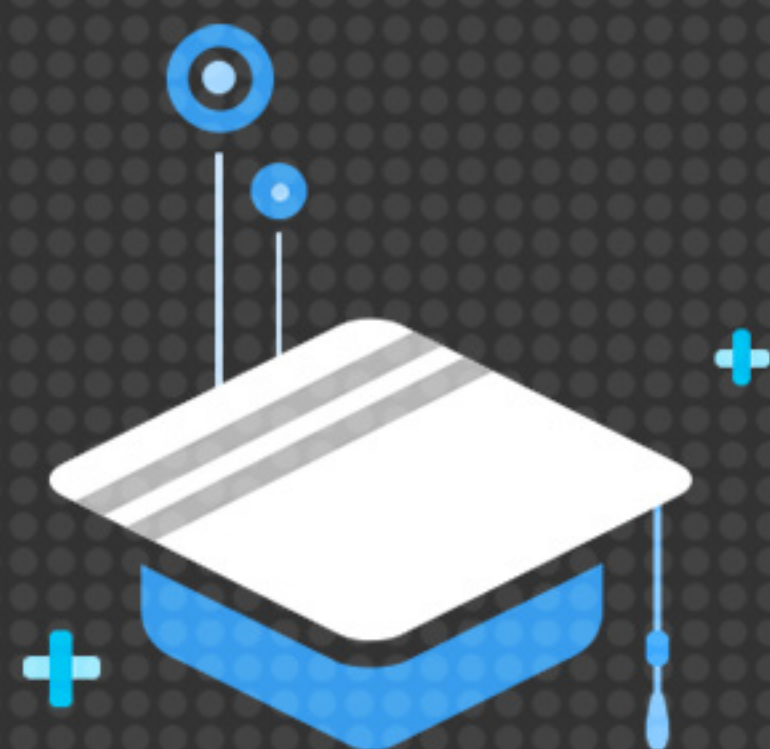
Certified Cyber Crime Intelligence Analyst

Analyze products and processes across the intelligence cycle and assess the capabilities, intentions, and activities of potential threats in the cyber domain.

25^{pts}

How to qualify

To qualify for any of the NW3C certifications an applicant must satisfy a minimum of 25 points, which are based on several conditions.



Education

Directly related education from an accredited institution of higher learning.



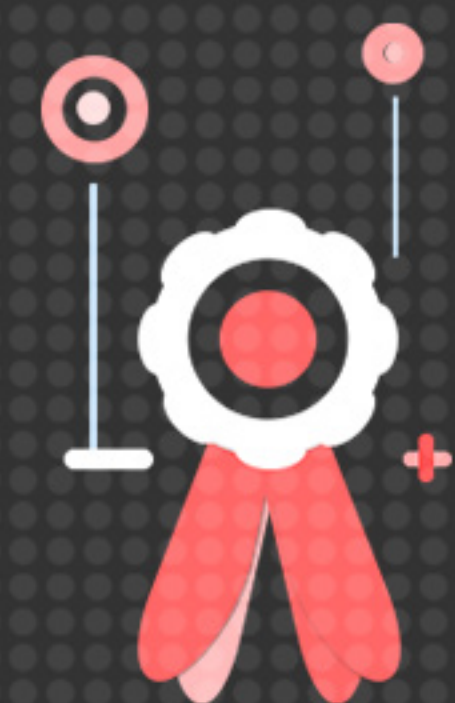
Work Experience

Directly related full-time work experience.



Training

Directly related NW3C or similar coursework completed over the past five years.



Certifications

Directly related industry-recognized certifications from another certification body.

Apply today at nw3c.org/certifications

[the] Details

01. Why should I apply?

NW3C certifications, backed by our industry-leading expertise and reputation, attest to demonstrated competence in digital forensics and/or the investigation of illegal cyber and financial activity. They open up doors for greater opportunities to serve and add credibility to your name in your professional environment.

02. How do I qualify?

To qualify for any of the NW3C certifications an applicant must satisfy a minimum of 25 points which are based on several conditions. The conditions include the number of years of directly related* full-time work experience, any education from an accredited institution of higher learning, NW3C or similar coursework completed over the past 5 years, and if you have one or more current industry-recognized certifications from another certification body.

**Directly related means training, education, or job function that specifically involves knowledge, skills, or abilities meeting the required body of knowledge for the certification.*

03. How are points calculated?



Use the QR code to see how points are calculated and point values.

04. Fee Schedule

\$50 USD non-refundable application fee is due upon submission of the certification application
\$250 USD due upon notice of certification approval

05. Renewal

\$50 USD annual certification renewal fee + 5 points

06. Questions?

Email certifications@nw3c.org or call +1-304-368-2376.