



Nicklaus
Children's
Hospital

Where Your Child Matters Most™

The Kenneth C. Griffin Surgical Tower

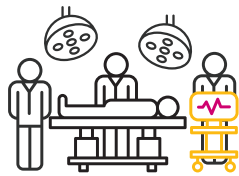


The Kenneth C. Griffin Surgical Tower elevates Nicklaus Children's Hospital's surgical care offerings in an environment that caters to the patient experience combined with leading-edge technology to ensure children and adolescents don't have to leave South Florida for expert pediatric surgical care.

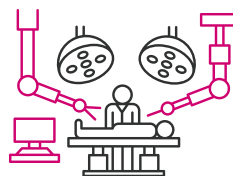
The five story, 131,000 square-foot facility is equipped with 12 advanced and fully integrated operating suites used to perform acute to the most complex pediatric surgeries. Pediatric surgical offerings include trauma care, surgical cancer interventions, pediatric plastic and reconstructive surgeries including cleft lip-and-palate, orthopedic and spine, brain and heart surgeries.



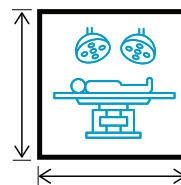
131,000
sq.ft. Facility



16,000+
Surgeries per Year
(including Ambulatory Surgery Center)



12
New Advanced
Operating Suites



800+
sq.ft. per
Operating Room



20
Inpatient rooms for
Surgical Patients



The Kenneth C. Griffin Surgical Tower



1st floor: Registration and access



2nd floor: Pre-and post-operative suites, 2 anesthesia induction rooms, and 6 operating rooms dedicated to brain, heart, orthopedic spine, pediatric trauma, and plastic surgery.



3rd floor: Pre-and post-operative suites, 2 anesthesia induction rooms, and 6 operating rooms dedicated to ENT, oncology, ophthalmology, orthopedics, pediatric general surgery, and urology.



4th floor: Sterile processing and surgical administrative offices



6th floor: Dedicated unit with 20 inpatient rooms for surgical patients.

Highlights

Patient-and-Family Friendly Amenities

- Spacious pre- and post- surgical spaces with individual rooms
- Up-to-the-minute texting platform for surgical updates
- Virtual reality tools to keep patients calm and entertained pre- and post- surgery
- Immersive technology to display videos and reduce anxiety giving patients a theater-like experience
- Enhanced registration process
- Convenient meal purchasing stations
- Induction rooms enable families to stay with their child as they undergo anesthesia
- Covered entrance with accessible drop-off and pick-up area for families

Surgical Technologies

- The Griffin Surgical Tower has connecting walkways to the cardiac intensive care unit, the intraoperative MRI suite, and the patient observation unit (3 south).
- All surgical suites are video integrated with streaming capabilities for medical education.
- The facility is equipped with O-Arm imaging technology to support advanced imaging for pediatric brain and spine surgeries
- Our surgeons utilize virtual reality tools for surgical planning
- We have acquired the Zeiss® microscope robotic visualization system
- Our teams utilize the DaVinci® robotic system for minimally invasive surgery
- Our new surgical suites are equipped with intraoperative monitoring/streaming for surgical education
- The facility now has the latest technologies for surgical sterilization and automated carousel equipment storage for efficiencies

About the Donor: Kenneth C. Griffin

In recognition of a generous \$25 million gift, the tower is named after Citadel founder and CEO Kenneth C. Griffin. Mr. Griffin's donation also helps fund Nicklaus Children's four major institutes advancing pediatric care related to the brain, cancer and blood disorders, the heart, and orthopedics.



Where Your Child Matters Most™