



Compression Therapy for

Venous Disease & Lymphedema



Juzo – always there for you

Customer service is a top priority at Juzo – and has been for more than 100 years. Our passionate, reliable and flexible staff is happy to advise you on any aspect of compression garments. Your customer service representative is knowledgeable in all areas of our quality products and are glad to assist you with any questions or issues you might have.

More than 100 years of experience in compression therapy

The history of the family-run business Juzo extends back to the year 1912. It was in that year that Julius Zorn GmbH (Juzo) was founded in Zeulenroda. This small city in the southeast of Thuringia was already regarded at the time as the elastic stocking manufacturing capital – a place where a high level of know-how and experienced employees came together. The hosiery industry in Zeulenroda has its roots as far back as 1750 and gained an

international reputation in the 19th century. In the year 1919 Juzo revolutionized its manufacturing processes: for the first time ever the stockings were now knitted rather than woven. The demand for these novel products increased steadily thereafter. By the 30s Juzo was already exporting its compression products to many countries in the world. After the Second World War, the grandson of the founder Julius Zorn settled in Aichach and developed the company Juzo

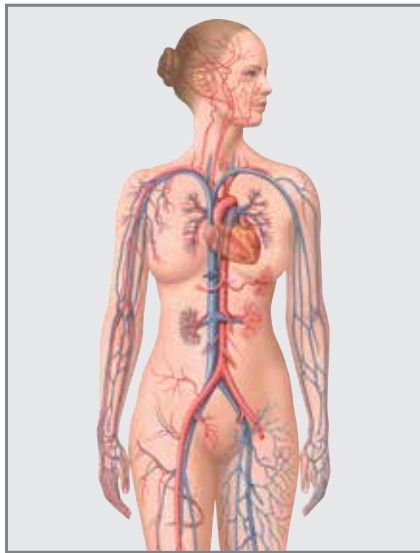
into an international business. Juzo introduced seamless compression stockings in 1951, and in 1962 Juzo began manufacturing the first latex-free compression stockings. Thanks to its consistent focus on quality and further developing its products, Juzo has been successfully growing its international business and currently employs people all over the world.

Summary



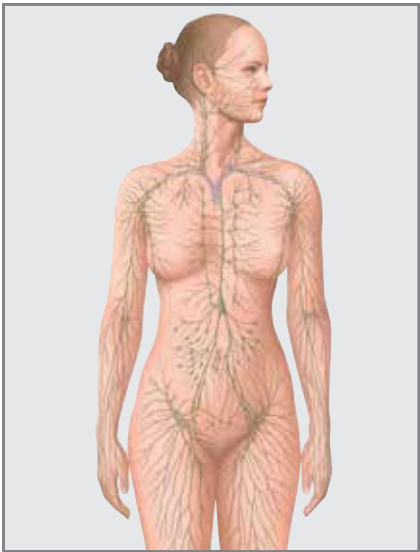
Compression Therapy

Benefits of Compression	3	Product Features (Flat Knit)	7
Medical Compression Stockings	4		
Knitting Techniques	5		
Product Features (Circular Knit)	6		



Venous Disease

Medical Background	8	Compression Fabrics (Circular Knit, Lower)	13-14
Diseases of the Vascular System	9-10		
Bonn Vein Study	11	Special Products	15
Prescription Recommendation	12	Donning Aids	10



Lymphology

Medical background	17	Extra options	23
Diseases of the lymphatic system	18-19	Special products	24
Prescription recommendation	20	Accessories	25-26
Compression fabrics (Flat Knit, Upper & Lower)	21-22		
(Circular Knit, Upper)			

Compression Therapy

Benefits of Compression

Compression therapy is one of the basic building blocks in the treatment of venous issues and edema disorders, such as lymphedema or lipedema.



Venous Disease

The use of compression therapy in the treatment of vascular diseases essentially pursues one goal – to promote the flow of blood back to the heart and thus to considerably reduce pain and swelling. The use of compression stockings is intended to build on the success achieved after the blockage has been removed and to prevent the patient's condition from deteriorating. A compression stocking exerts a precise amount of external pressure on specific parts of the limb. This means that the fluid which has accumulated in the tissues is more readily removed by the lymph vessels, thus managing swelling. Secondly, the external pressure causes the diameter of the veins to decrease and brings the valves closer together, enabling them to close more easily. Thirdly, when the leg is moved, the pressure which arises as a result of the musculature pushing against the resistance of the compression stocking causes more blood to be pumped from the vascular system in the direction of the heart. The power of the muscular pumps in the foot and calf is appreciably increased, which means that more blood can be transported back to the heart, thereby also reducing the amount of fluid filtered into the tissues.

Lymphology

Compression therapy also plays an important role in the managing of lymphatic edema. It improves venous drainage, thereby reducing capillary filtration and edema formation and also lymph drainage, thereby improving edema. Doctors recommend that manual lymph drainage, physiotherapy and compression bandages initially should be used to reduce and stabilize lymphatic edema. In cases of prolonged management, the bandages are replaced with a compression stocking. Individual factors, such as the patient's susceptibility to a re-occurrence of swelling and the weakness of the connective tissues determine, which compression class is needed. Specialist stores will adapt compression stockings to the individual requirements of the patient, such as their work situation, degree of mobility and age.

Medical Compression Stockings

Medical compression stockings from Juzo guarantee therapeutic graduated compression. The pressure decreases continuously from the ankle section upward towards the distal end. We can provide a wide variety of garments, from below-knee stockings to pantyhose, from glove to face mask, depending on the therapeutic application.

Mild Compression	Circular 15-20 mmHg	
	<ul style="list-style-type: none">· minor obstructive disorders accompanied by feelings of tiredness or heaviness in the legs· isolated varicose vein formation· preventative measure during pregnancy· therapeutic treatment of scars	
Moderate Compression	Circular 20-30 mmHg	Flat Knit 18-21 mmHg
	<ul style="list-style-type: none">· varicose veins· leg swelling during pregnancy· after varicose vein sclerosis or operations· for the long-term treatment of healed leg ulcers· propensity for edema formation exists· therapeutic treatment of scars	
Firm Compression	Circular 30-40 mmHg	Flat Knit 23-32 mmHg
	<ul style="list-style-type: none">· varicose veins accompanied by damage to the deep leg veins· after healing of venous ulcers· when a severe swelling tendency exists· chronic venous insufficiency· severe propensity for edema formation	
Strong Compression	Circular 40-50 mmHg	Flat Knit 34-46 mmHg
	<ul style="list-style-type: none">· severe lymphedema· severe chronic venous insufficiency· management of active venous uclers	
Extra Strong Compression	Circular N/A	Flat Knit 50+ mmHg
	<ul style="list-style-type: none">· severe post thrombotic conditions· severe lymphedema· elephantiasis	

Knitting Techniques



Circulation Knit

Circular knitted seamless products are predominantly used in venous therapies. Today's seamless compression stockings are often indistinguishable from consumer socks and hosiery and comfortable to wear. Of course, they still have the therapeutic benefits of compression therapy. These compression stockings are used for indications such as varicosity, chronic venous insufficiency, post-operatively after vein treatments or mild edema



Flat Knit

Flat knitted seamed compression products are the ideal complement to lymph drainage treatment when managing edema. Compression garments help secure the long-term success after decongestive therapy and is considered the gold standard in managing lymphedema. When you need maximum containment, our flat knit seamed fabrics are the perfect choice. Juzo strong also offer additional benefits of a massaging effect that help promotes lymph drainage. In conjunction with movement, Juzo flat knit seamed garments produces high working pressure that provides optimum compression of the edematous tissue.



New knitting technology

An innovative seamless knitting technology enables the seamless manufacture of compression garments. It eliminates seams completely. The soft 3-dimensional fabric conforms perfectly to anatomical features and produces a well-defined pressure gradient.

How it works

The compressive fabric exerts a pressure on the leg, and thereby also on the veins. This reduces the diameter of the veins, thus enabling the damaged venous valves to close again. This process helps increase circulation.

Circular knitted products from Juzo:

Juzo Naturally Sheer, Juzo Soft, Juzo Dynamic Cotton, Juzo Dynamic, Juzo Silver, and Juzo Basic

Custom-made fabrics

Juzo flat knit products, Juzo Expert and Juzo Strong are knitted stitch by stitch to precisely match the body measurements of the patient, and come in various styles to suit the particular therapeutic application. Juzo garments are made from different combinations of materials, for example incorporating cotton or silver, and are therefore able to provide a wide variety of patient therapy.

Flat knitted products from Juzo:

Juzo Expert, Juzo Expert Silver, Juzo Expert Cotton, Juzo Strong and Juzo Strong Silver

Seamless Compression therapy

Juzo Seamless Gloves and Guantlets are especially suitable for treating mild stages of lymphedema where the anatomical situation is still normal.

Product features

Circular knit (seamless)



Perfect Fit

The exceptional stretch properties guarantee an outstanding fit and high wearing comfort.



Trend Colors & Prints

A large color selection with additional fashion colors and prints – there's something to suit every style.



Versatile Silicone Border Options

An optimum hold for every requirement – whether for the fashion-conscious woman, active man or for sensitive skin.



Top Border

Knee-high stockings and arm sleeves with smooth, non-constricting and comfortable-to-wear top border.



Variety of Standard Sizes

Almost all models are available in standard sizes. For special needs, custom-made is optional.



Product Features

Flat knit (with seam)



Versatile fabrics

Special materials for optimal comfort and therapeutic benefit, such as our silver thread or cotton.



Fashionable color

Colors to match today's fashion styles.



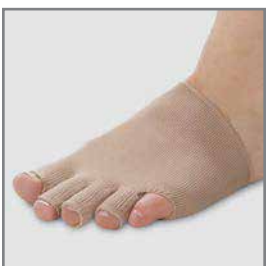
Flat seams

Comfortable to wear thanks to the flat seam and elastic knit.



Extra options

Many special options for a perfect fit.

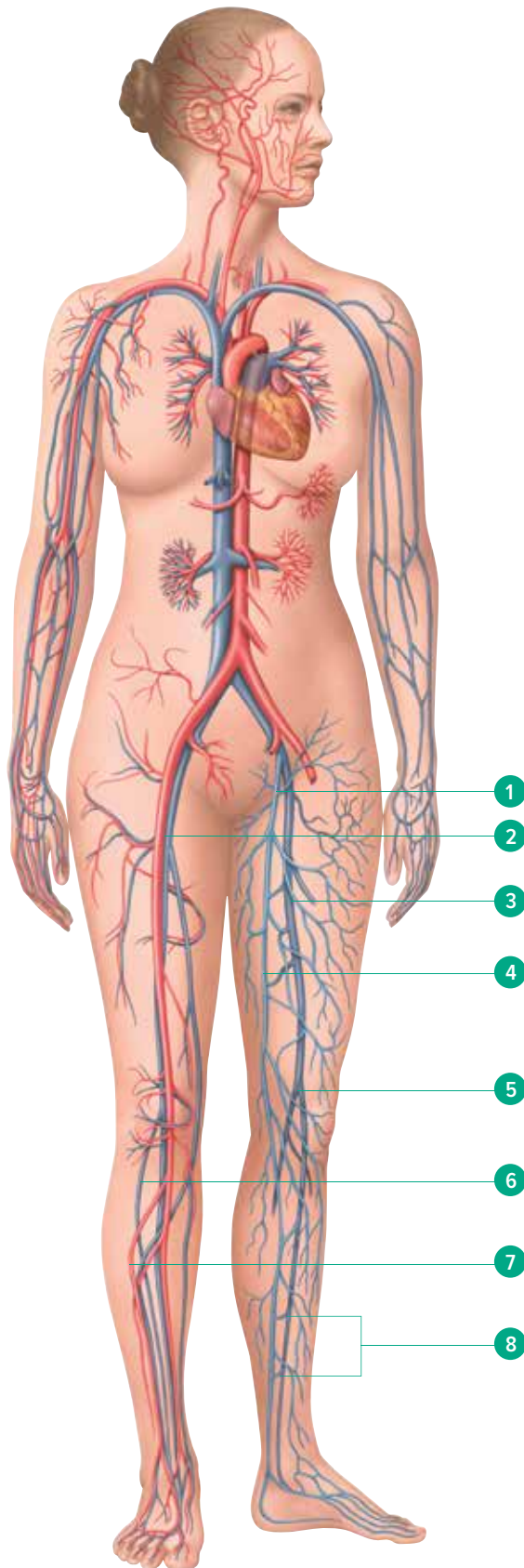


Full-body solutions

Custom-made items from toe parts to face masks

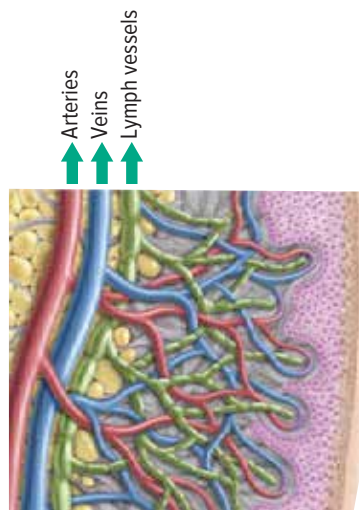


Venous Disease



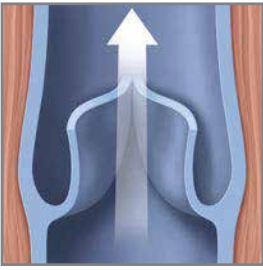
Veins are important for transporting and storing blood as well as for regulating body temperature

“Blood is a very special fluid” – more precisely, it is a perfect means of transport whose job is to move all sorts of substances to even the remotest parts of the body. The blood is pumped continually through the blood vessels. The heart of an adult person pumps, on average, around five liters of blood per minute through the body. It can increase five fold during physical exertion. The blood, enriched with oxygen from the lungs, travels via arteries and capillaries – the finest arterial branches – into all areas of the body where metabolic processes take place. Veins collect oxygen-depleted blood, containing the waste metabolic products from the tissues, and move it back into the lungs via the heart – the cycle is complete. As well as acting as a transport system, veins also have the important task of storing the large amounts of blood circulating around the body. More than 65 percent of the overall volume of blood in the human body is stored in the vascular system so that the blood can be made readily available in the circulatory system when it is put under strain – e.g. during physical exertion. Veins are also important for the regulation of body temperature. This is all hard work, particularly for the leg veins. They need to transport the blood, against the force of gravity, from the lowest points in the body towards the heart.

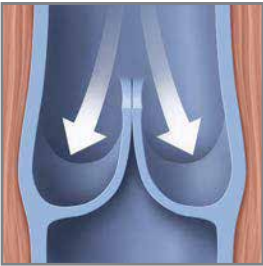


Blood is pumped via the arteries all the way down to the big toe. 90% of the blood flows back to the heart through the deep vein system. The remaining 10 % are transported by the superficial veins.

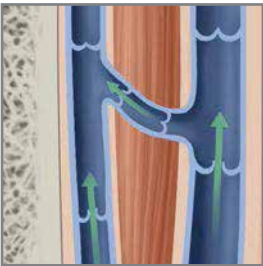
- 1 Crosse (external iliac vein)
- 2 Arteria femoralis
- 3 Vena femoralis
- 4 Vena saphena magna (greater saphenous vein)
- 5 Vena poplitea
- 6 Vena saphena parva (small saphenous vein)
- 7 Arteria tibialis posterior
- 8 Perforators



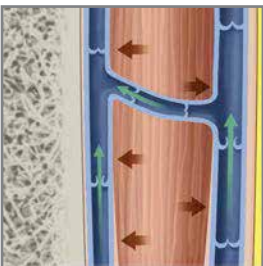
Venous valve open



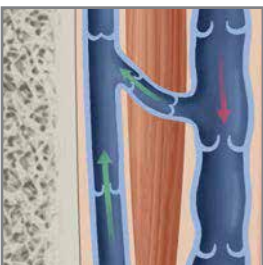
Venous valve closed



Normal vein



Superficial vein under compression therapy



Superficial distended vein

The veins in the legs are divided into superficial and deep vascular systems. Superficial veins run directly under the skin and above the musculature. They collect the venous blood from the skin and the subcutaneous tissue and take it via numerous connective veins (venae perforantes) to the deep vascular system which is the direct vicinity of the arteries. From there, the oxygen-depleted blood from the musculature and bones is taken back via the inferior vena cava into the right atrium.

In healthy people, around 90% of venous blood flows through the deep vascular system while 10% travels via the superficial system.

The vascular valves also form an important part of the vascular system. These pocket-like valves or “locks” ensure that the blood flows in the right direction, i.e. towards the heart. As long as the blood flows towards the heart, the valves remain open. When the pressure in the veins increases, for example, when we stand up, the valves close and prevent the venous blood from flowing back.

Various Transport Mechanisms Work Together to Promote Venous Circulation

It is not only the action of the vascular valves, but also a complex interplay between other transport mechanisms which promotes the transport of venous blood back to the heart against gravity, or, as it were, uphill. The most important “motors” which cause blood to flow back to the heart from the legs are the so-called muscular pumps, in which veins, muscles and joints work together. The principle is very simple: whenever the legs perform bending or stretching movements, such as those involved in walking, the muscles contract and relax alternately. When the muscles contract, the resulting pumping / suction mechanism pushes the blood from the adjoining crural vein in the direction of the heart. This causes the pressure in the emptied deep veins to fall, so that the blood from the superficial vascular system is sucked forward, allowing it to be transported. The muscular pumps in the toes, soles, ankles, calves, knees and thighs perform this process in sequence.

Venous Disease

Varicosis can be caused by a number of different factors

There are many different factors which can lead to a disruption of the normal function of the veins. Vascular issues mainly have a genetic cause or arise as a result of an age-related loss of elasticity in the vein walls. Other factors such as pregnancy, lack of exercise and activities which predominantly involve sitting or standing can promote the development of vascular disease. However, whatever the cause behind the problem, vein-related leg issues are always the visible and / or tangible symptom of an imbalance between arterial flow and venous back flow. As a result, the flow of blood from the legs slows down, which causes the pressure in the veins to increase and the veins to become distended. This damages the vein walls and valves and the back flow of the blood is increasingly disrupted – a vicious circle arises.



Varicose veins – often a hereditary disease or a consequence of prolonged pressure on venous system

Visible, distended, twisted veins are described as varicose veins (varices). 90 percent of varicose veins occur in the legs. Depending on the cause, they are classified as secondary varices – which occur as a result of other conditions – and primary varices – e.g. those caused by hereditary weakening of the veins.



Failure of the circulatory system is chronic venous insufficiency

The failure of the vascular system's transport function is referred to as chronic venous insufficiency. It can occur as a result of established varices or after a vein blockage (thrombosis) caused by a blood clot. The first symptoms are pains and a feeling of tightness and heaviness. The higher pressure in the veins leads to increased flow of fluid into the tissues from the blood capillaries causing swelling (edema).



Leg ulcers are a consequence of chronic venous disease

The accumulation of fluid prevents the exchange of oxygen between the red blood cells and the recipient cells, which in turn leads to tissue damage and the destruction of cells. A visible symptom is the formation of an ulcer on the lower leg (Ulcus cruris), the most serious consequence of chronic venous insufficiency.



Thrombophlebitis or inflammation of the vein walls

An inflammation of the superficial veins is referred to as thrombophlebitis. The symptoms are a distinct reddening of the skin and severe pressure pain in the affected area. Injections or infusions into the affected vein can often trigger the problem.



Bonn Vein Study 2000 – 2002

Bonn Vein Study of the German Society of Phlebology

Epidemiological investigation into the question of the frequency and severity of chronic venous diseases in the urban and rural population

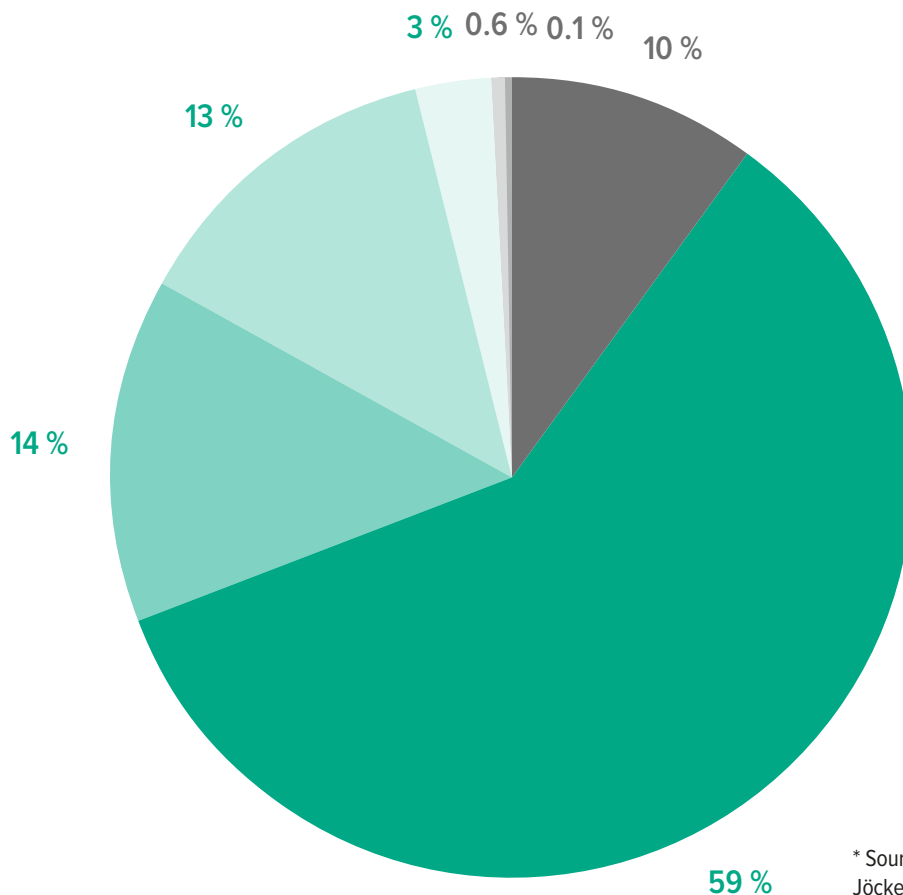
*“Every 5th woman and 6th man has venous insufficiency. 60 % of patients with advanced venous disease are not treated.”**

3072 people

Age range: 18 – 79

1350♂ 1722♀

- C₀ = 10 % symptom-free
- C₁ = 59 % minor changes
(telangiectasia, reticular varicose veins)
- C₂ = 14 % subcutaneous varicose veins
- C₃ = 13 % symptomatic venous disorders
medical treatment required (oedema)
- C₄ = 3 % skin changes
- C₅ = 0.6 % healed ulcer cruris
- C₆ = 0.1 % acute ulcer cruris



* Source: Rabe E., Hertel S., Bock E., Hoffmann B., Jöckel KH., Pannier F. Therapy with compression stockings in Germany – results from the Bonn Vein Studies. J. Dtsch. Dermatol. Ges. 2013 Mar; 11(3): 257-61.

Prescription Recommendation

Indications	Juzo Naturally Sheer	Juzo Power Comfort, Lite Vibe	Juzo Power RX	Juzo Soft	Juzo Dynamic	Juzo Move	Juzo Silver	Juzo Compression Wrap
Minor varices								
Beginning varices during pregnancy	•	•	•	•		•		•
Prophylaxis of venous disorders for mobile patients								
CVI stage 1	•	•	•	•	•	•		•
After thrombophlebitis	•	•	•	•	•	•	•	•
Primary varices								
Secondary varices	•	•	•	•	•	•		•
Distinctive varices during pregnancy								
Vein stripping								
Sclerotherapy	•	•	•	•	•	•		•
After removal of leg veins (e.g. bypass surgery heart)								
CVI stage 2				•	•	•	•	•
Atrophie blanche					•		•	•
Phlebothrombosis					•		•	•
After healing of heavy venous ulcers					•		•	•
Thrombophlebitis				•	•	•	•	•
Severe secondary varices					•		•	•
CVI stage 3					•		•	•
Post-thrombotic syndrome					•		•	•

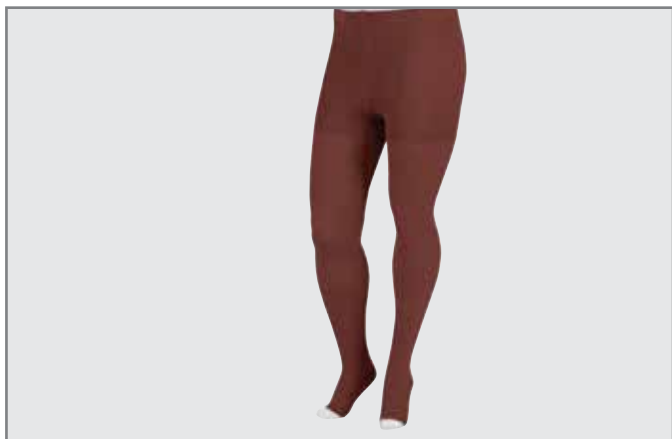
Classification regarding CEAP (Clinical Etiology Anatomy Pathophysiology)

Clinical classification	Juzo Naturally Sheer	Juzo Power Comfort	Juzo Power Lite	Juzo Power Vibe	Juzo Power RX	Juzo Soft	Juzo Dynamic	Juzo Move	Juzo Silver	Juzo Ulcer Pro	Juzo Compression Wrap
C ₁ Spider veins, reticular varices	•	•	•	•	•	•		•			
C ₂ Varices	•	•	•	•	•	•	•	•	•		•
C ₃ Edema		•	•	•		•	•	•	•		•
C _{4a} Pigmentation, purpura, eczema									•		•
C _{4b} Hypodermatitis, lipodermatosclerosis, atrophie blanche							•		•		•
C ₅ Healed ulcer cruris venosum					•	•	•	•	•		•
C ₆ Active ulcer cruris venosum							•		•	•	•

Etiologic classification	Anatomic classification	Pathophysiologic classification
Ec congenital	s superficial veins	Pr reflux
Ep primary	p perforator veins	Po obstruction
Es secondary (post-thrombotic)	d deep veins	Pr,o reflux and obstruction

Compression Products for Veins

Lower Extremity



Juzo Dynamic

Maximum containment for circular knit



Juzo Naturally Sheer

Sheer and fashionable



Juzo Dynamic Cotton for Men

Comfortable, with longer foot portion



Juzo Soft

Best seller. Most comfortable garment.



Juzo Move

Easiest on/off compression stockings



Juzo Silver

Made with X-Static silver fiber



Juzo Print Series
Fun patterns and print designs



Juzo Trend Colors
Fashionable colors



Juzo Trend Tie Dye Colors
Available in AD, AG, AT & BT, open or closed toe



Special Products and Accessories



Juzo Compression Wrap

Adjustable compression system

Item # 6000

Available in standard sizes

Lower extremity, foot, calf,
knee & thigh

Upper extremity, hand & arm

- Used as an alternative to conventional multilayer bandaging.
- High working and low resting pressure thanks to short-stretch properties.
- Hook fastener makes it easy to apply and adjust for body circumference fluctuations.
- Reversible (black or beige side)



Juzo Ulcer Pro Kit

Medical compression

stocking system

Item # 6072 & 6073

Available in standard sizes

- Medical compression stocking system for the management of venous ulcers.
- Package contains 2 Ulcer Liners and 2 Dual Stretch knee high stockings.
- Helps keep garment clean and wound bandage in place while providing therapeutic compression.



Juzo Liner

Underliner for adjustable compression systems

Item # 9641 AD

Available as a pair

- Preserves sensitive skin.
- Protects wound dressing when donning and doffing.



Juzo Silver Liner

Item # 9640

Available in 2 sizes

- Stockings offer skin and wound protection during donning and doffing of compression garments.
- Keeps fabric antimicrobial & odor free with X-Static silver fiber
- Ideally suited for incorporating wound dressings or securing special pressure pads.



Pressure pads by Dr. Rotter

Item # 9400

Packaging unit 1 piece, left or right

- Targeted compression

Donning Aids



Juzo Slippie Gator

Item # 1920SA

Donning aid for compression stockings / pantyhose
with open or closed toe

- Easy to use, light weight and portable.
- Minimizes bending at the waist.
- Available in 2 sizes, regular and large.



Juzo Slippie Leg

Item # 1901

Package unit 20 pieces
Donning aid for compression stockings / pantyhose
with open toe

- Made of strong Tyvek.
- Excellent gliding effect.



Juzo Arion Easy-Slide Leg

Item # 1702

Donning aid for compression stockings / pantyhose
with open toe

- Smooth, two-layer material
- Increases independence and therapy compliance of patients.
- Reduces physical exertion required by patient or nursing staff.



Juzo Donning Gloves

Item # 9300

Package unit 1 pair or
box of 12 pair

- High-quality textile glove, not made with natural rubber.
- Long-life gloves for making donning of compression garments easier.
- Available in 4 sizes, small, medium, large and extra large.



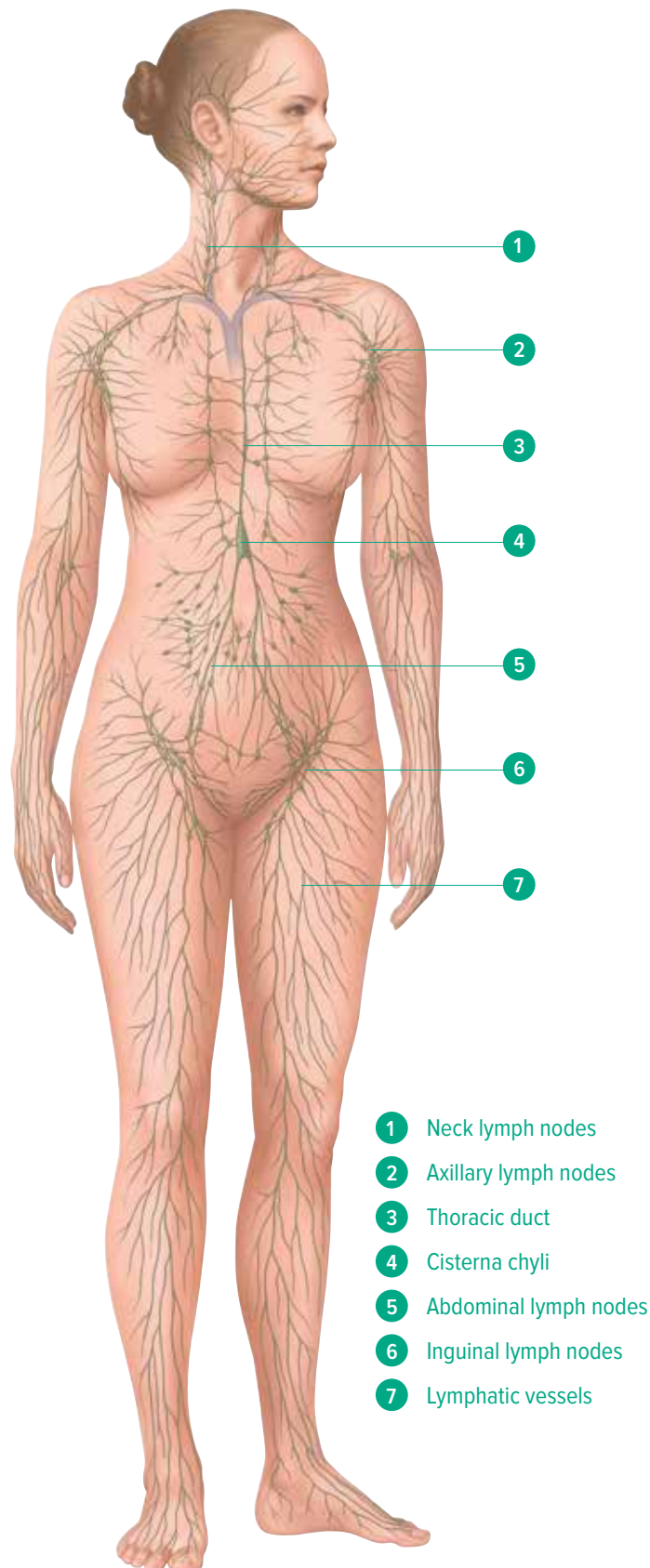
Juzo Adhesive Lotion

Item # 9800

Available as 2oz rolls ea
or box of 12 rolls

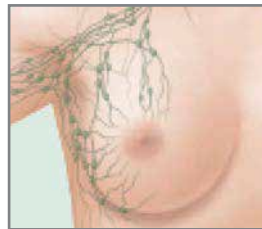
- Special-purpose adhesive for reliable and easy securing of compression fabrics with a top border.

Lymphedema

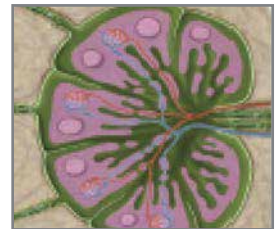


The lymphatic system is responsible for drainage

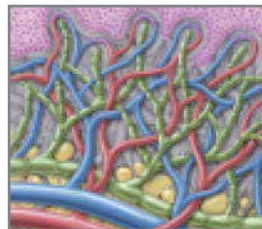
The lymphatic system is the 3rd vessel system in the human body. It is a drainage and transport system with interconnected lymph nodes. The lymphatic vessels are responsible for transporting the tissue fluid, or lymph, which is formed from fluid filtered out of the blood capillaries. The main functions of the lymphatic system are to drain fluid and waste products such as macromolecules including proteins from the intercellular spaces and to fight infection as part of the body's immune system. In the case of increased capillary filtration, they counteract the accumulation of fluid in the tissues. The lymph vessels travel alongside the blood vessels and transport about 2 liters of fluid per day.



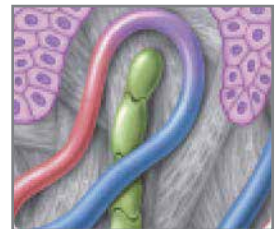
Axillary lymph nodes



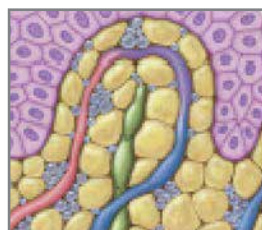
Cross-section of a lymph node



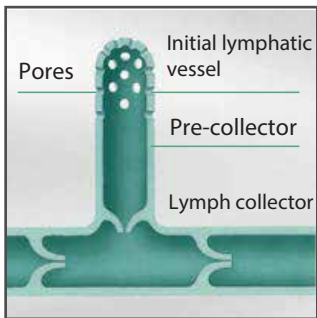
Detailed view of lymphatic system



Lymphatic vessel



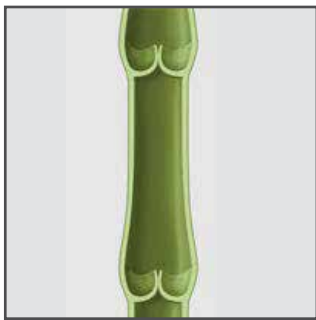
Adiposis restricting lymphatic vessels



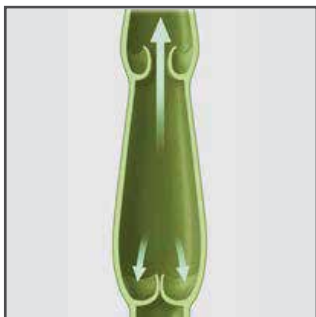
Structure of the lymphatic system

Dense network of lymphatic vessels

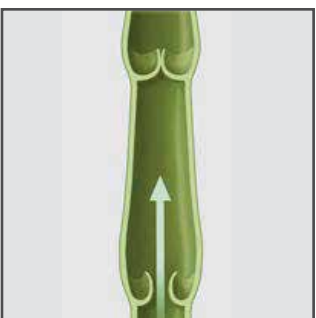
Almost all of the body's tissues contain a dense network of lymphatic vessels. The tiniest components of the lymphatic system are valveless lymphatic capillaries which project into the tissue like fingers. Joined onto these are pre-collectors which gradually increase in size to become lymph collectors. Connected to the ends of the collectors are lymph nodes, which are involved in the immune response to infection and the removal of foreign substances. From there, new lymph collectors transport the lymph via three large channels which lead into the vascular system in the upper thoracic cavity.



Resting phase after contraction



Contraction phase



Filling phase

Lymph is moved by the rhythmic movements of the lymphatic vessels

Due to muscle contractions, rhythmic pump-like movements transport the lymph through vessels to the next node. The contractions of the musculature can be increased depending on the volume of fluid in the lymphatic vessels, thus also increasing transport capacity.

Lymphedema



Drainage problems in the lymphatic vessels can cause lymphedema

When the drainage function of the lymphatic vessels is disrupted, an increased amount of lymph fluid accumulates in the tissue (lymphedema). This manifests itself as severe swellings in the affected areas. Patients also complain of feelings of tightness, pain and restricted movement. In the case of more established lymphedema, the connective tissue hardens (induration), resulting in the clinically significant Stemmer's sign, i.e. the skin covering fingers and toes can no longer be lifted in a fold as normal but is taut or cannot be lifted at all. Two forms of lymphedema are distinguished, depending on the cause. Primary lymphedema describes lymphedema due to a genetic cause. However, the secondary forms, in which parts of the lymphatic system have been damaged by tumors, operations, inflammation or accidents, are far more prevalent. One common example of this is the secondary lymphedema following breast cancer treatment such as axillary node clearance.



The majority of people with lymphedema are women. In order to draw a clearer clinical distinction between the various degrees of severity, lymphedema is divided into three stages. In the first stage, referred to as pitting edema, the swelling is soft and it is easy to make an imprint in it with your finger. The swelling can be reduced by keeping the limb elevated. The second stage is characterized by a hardening of the connective tissue, in which case the condition is not improved by keeping the limb elevated. In the third stage the overall volume of the swelling increases and the skin changes.



Prescription Recommendation

Indication	Stage	Symptom	DECONGESTION PHASE	MAINTENANCE PHASE									
			Juzo Compression Wrap	Juzo Night	Juzo Move	Juzo Dynamic	Juzo Dynamic Silver	Juzo Soft	Juzo Expert	Juzo Expert Silver	Juzo Expert Cotton	Juzo Strong	Juzo Strong Silver
Lymphedema	1	Spontaneously reversible, soft swelling, pressing on the skin leaves a pit, no skin changes	•	•	•	•	•	•	•		•		
	2	Spontaneously irreversible, onset of fibrosis, very little pitting, sometimes skin changes	•	•					•	•	•	•	•
	3	Advanced form, elephantiasis, fibrosis, chronic skin changes	•	•								•	•
Lipedema	1	Fine-nodule skin surface (orange peel skin), fatty swelling in the hip area			•	•	•	•	•		•		
	2	Coarse-nodule, uneven skin surface with large depressions							•	•	•	•	•
	3	Large, deformed skin flaps and lobules, with the tissue being firmer and harder	•						•	•	•	•	•

Compression Products for Lymphedema

Lower Extremity



Juzo Expert

Great containment, excellent comfort



Juzo Expert Silver

Dense, comfortable knit. Silver keeps fabric antimicrobial and odor free



Juzo Expert Cotton

Natural fibers for extra softness and comfort



Juzo Strong

Maximum containment product and micro massaging weave



Juzo Strong Silver

Keeps garment fabric antimicrobial and odor free.



Juzo Dynamic

Best containment from a circular knit

Compression Products for Lymphedema

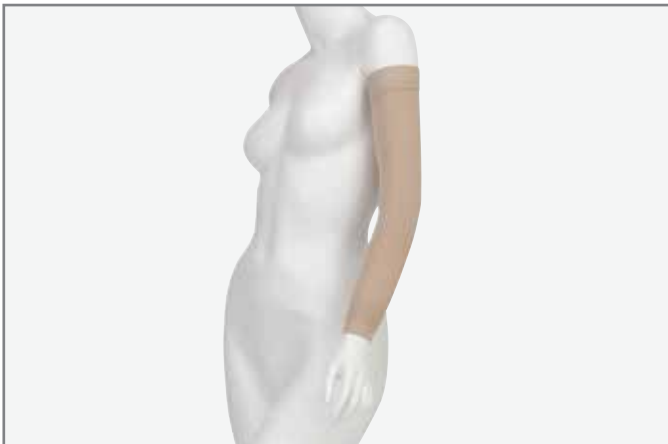
Upper Extremity



Juzo TrendColors
Fashionable colors



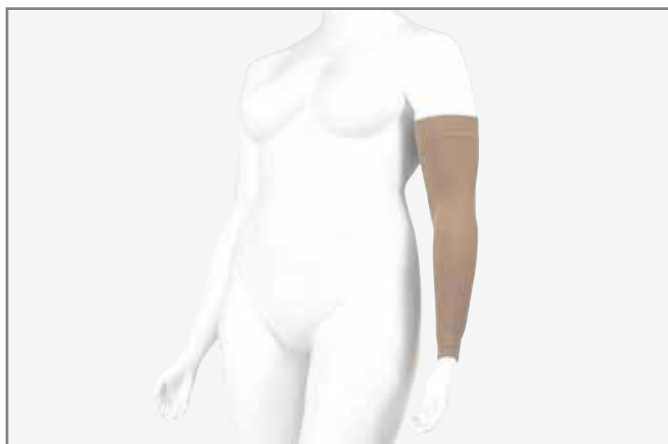
Juzo Print Series
Fun patterns and print designs



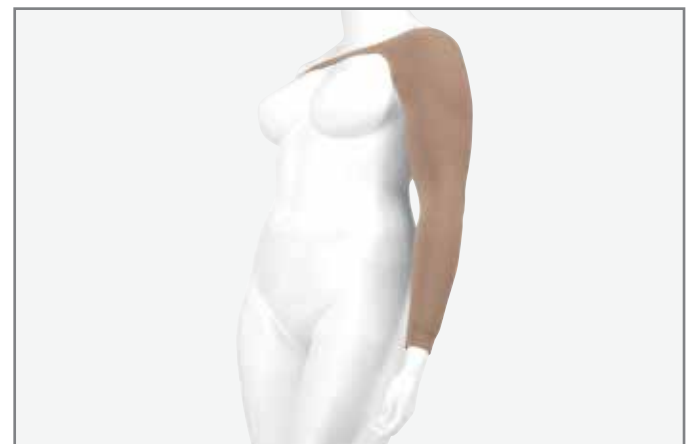
Juzo Soft
Extremely soft and elastic, very comfortable to wear



Juzo Dynamic
Maximum containment for a circular knit



Juzo Silver
Dynamic (circular knit), Expert & Strong (flat knit)



Juzo Expert & Strong
Flat knit, comfortable, excellent containment

Extra Options for Lymphedema



Slant Toe
(diagonal foot)
For AB / AD / AG / AT

- Compression right down to the toes, ideal when used in combination with foot-toe-portion
- Optimum fit / wearing comfort
- Circular borders and obstructions are prevented



VY Heel
(Y-stitching / 90° foot)
For AB / AD / AG / AT

- Reduces folding in the instep area.
- Anatomically knitted heel
- Improved fit for extremely severe edema on the bridge of the foot or for wheelchair patients.



Silicone Stopper
(placement on the thigh)
For AG / AT / Biker Short
and Capri pants

- For even better hold.
- Placement of silicone stopper on the thigh:
 - horizontal, medial lateral
 - vertical, anterior/posterior



Slant Top
(diagonal opening at “D”, “F” or “G”)
For AD / AG

- Optimized compression reduction in the proximal direction.
- Reduces tissue from protruding over the band
- Reduced risk of obstruction.
- Silicone border option also available.

Special Products and Accessories



Juzo Compression Wrap

Adjustable compression system
Item # 6000

Available in standard sizes

Lower extremity, foot, calf,
knee & thigh

Upper extremity, hand & arm

- Can be employed as an alternative to conventional multilayer bandaging.
- High working and low resting pressure thanks to short-stretch properties.
- Hook fastener makes it easy to apply and adjust for body circumference fluctuation.
- Reversible (black or beige)



Juzo Soft Compress

Juzo SoftCompress liners and pads can be worn under Juzo short stretch bandages, Juzo compression wraps or Juzo compression garments.
Upper & lower extremity.

- 100% cotton contact with skin, great for sensitive skin
- Quicker and easier to self bandage, avoids constriction from bandage edges and protects joints.
- Vertically stitched foam channels create differences in pressure helping to drain lymph fluid.



Juzo Bandages & Gauze

Juzo Short Stretch Bandages
Item # 6846
available, 6cm x 5m, 8cm x 5m,
10cm x 5m, 12cm x 5m

Juzo Gauze
Item # 6847 6cm x 4m (finger)
Item # 6848 4cm x 4m (toe)

- Short stretch bandages exerts low resting pressure & high working pressure.
- Short stretch bandages are 100% cotton and machine washable.
- The Juzo Gauze is great for sensitive skin, joints and hard to bandage areas.
- The Juzo Gauze is non slip and the high elasticity of the fabric makes it's application quick and easy.



Juzo Night

Item # 6872
Available in 3 sizes, 2 lengths
Specify right or left

- Removable fasteners for ease of application.
- Cooling material wicks moisture & reduces sweating.
- Foam channels help promote lymphatic drainage.
- Adjusts to fluctuations in circumference that occur over the course of treatment.
- Encourages self care for nighttime lymphedema maintenance.

Accessories



Pressure pad for the hand

Item # short 9420, 9420SV*
long 9420EX, 9420SVEX

*Packaging unit 1 piece

- Covered with textile or silver fiber
- To be inserted between back of the hand and glove
- * Covered with silver-containing material.

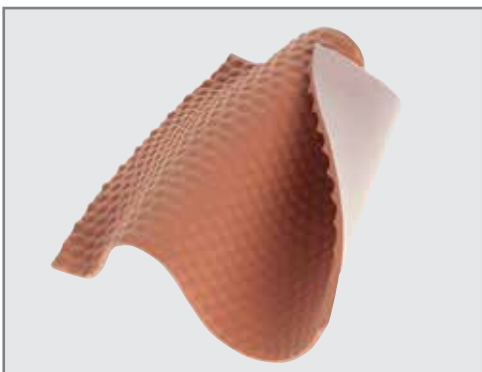


Pressure pads by Dr. Rotter

Item # 9400

Packaging unit 1 piece, left or right

- For DIY fitting.



Juzo Therapad

Item # 9430

Packaging unit 1 piece

- Aid for lymphedema and lipedema
- Not made using natural rubber, polyamide fleece on the rear
- Size 20 x 29.5 cm (can be cut to any size)



Juzo Therapy Tape

Item # 6050

Packaging unit 1 roll or box of 12

Colors: black, beige, pink, blue

- Therapeutic Support
- Sticks through absolutely everything
- Water resistant for 5-7 day use
- Can be worn 24/7
- Great alternative to heavy bandages
- Not made using natural rubber

Donning Aids



Juzo Arion Easy-Slide Arm

Art. no. 1701

Donning aid for compression sleeves / elbow supports

- Smooth, two-layer material, very easy to use
- Increases independence and therapy compliance of patients
- Reduces physical exertion required by patient or nursing staff



Juzo Arion Easy-Slide Leg

Art. no. 1702

Donning aid for compression stockings / pantyhose with open toes

- Smooth, two-layer material
- Increases independence and therapy compliance of patients
- Reduces physical exertion required by patient or nursing staff



Juzo Donning Gloves

Art. no. 9300

Package unit 1 pair or box of 12 pairs

- High-quality donning glove, made not using natural rubber
- Long-life gloves for donning compression garments easier



Think Green. Live Green.

Juzo is committed to reducing its carbon footprint for a greener planet.

Wind
Turbine



Solar
Array



Prairie Land Grass
Landscaping



Motion Sensor
Lights



Hands-Free
Faucets & Dryers



Recycling
Centers



Juzo USA
3690 Zorn Drive
Cuyahoga Falls, OH 44223
www.juzousa.com
support@juzousa.com
1-800-222-4999

Juzo Canada Ltd.
1100 Burloak Dr. Ste. 300
Burlington, ON L7L 6B2
www.juzo.ca
support@juzo.ca
1-844-229-4999



Intertek

®Juzo, Slippies, Slippie Gators, Keep Moving & Signature Collection are registered trademarks of Julius Zorn, Inc. • Lycra Premium Stretch Fibers is a registered trademark of Invista. Tyvek is a registered trademark of Du Pont de Nemours and Company. • X-STATIC is a registered trademark of Noble Fiber Technologies, Inc.

© 2019 Julius Zorn Inc.