

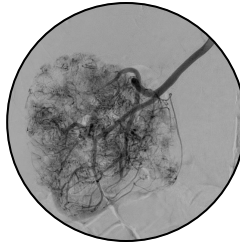
# GPX™ EMBOLIC DEVICE

Controllable.<sup>1</sup>  
Versatile.<sup>1</sup>  
Simple.<sup>1</sup>

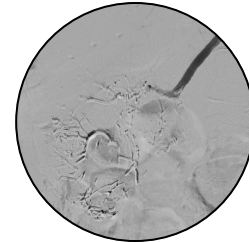
*Embolic Device Designed for Highly-Targeted Vessel Occlusion:*

- Simple Preparation<sup>1</sup>
- Compatible with Standard Catheters<sup>1</sup>
- Controlled Delivery<sup>1</sup>
- No DMSO Solvent Needed<sup>1</sup>

## TUMOR DEVASCULARIZATION (at Christchurch Hospital)<sup>2</sup>

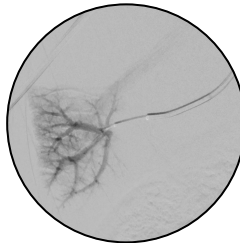


*Before GPX™ Embolic Device*

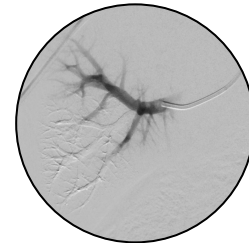


*After GPX™ Embolic Device*

## PORTAL VEIN EMBOLIZATION (at Auckland City Hospital)<sup>2</sup>



*Before GPX™ Embolic Device*

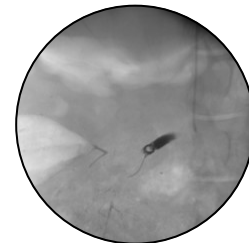


*After GPX™ Embolic Device*

## GPX™ + COIL<sup>3</sup>



*Before GPX™ Embolic Device*



*After GPX™ Embolic Device*



<sup>1</sup> Fluidx Medical Technology data on file.

<sup>2</sup> Case study data on file.

<sup>3</sup> In vivo testing data on file.

The GPX™ Embolic Device is under development and does not have marketing clearance or approval in any market at this time.  
Applicable only in New Zealand: For investigational use only.