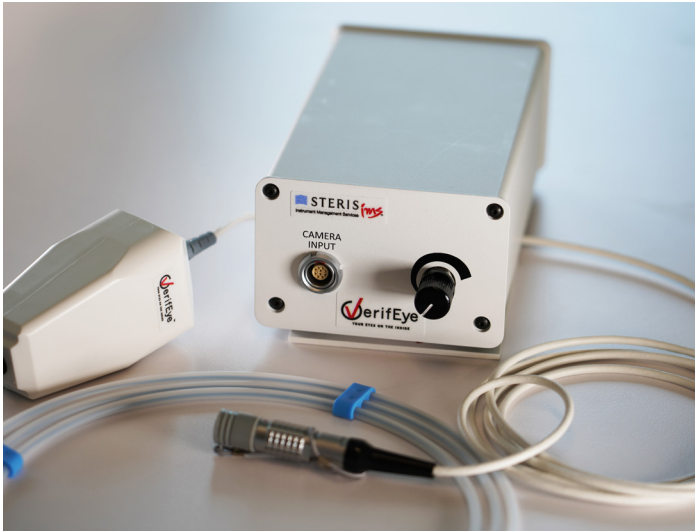
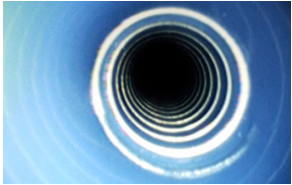
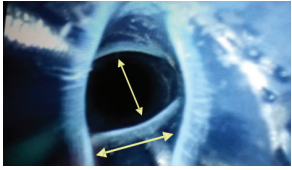
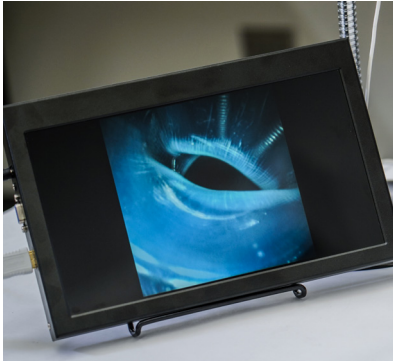
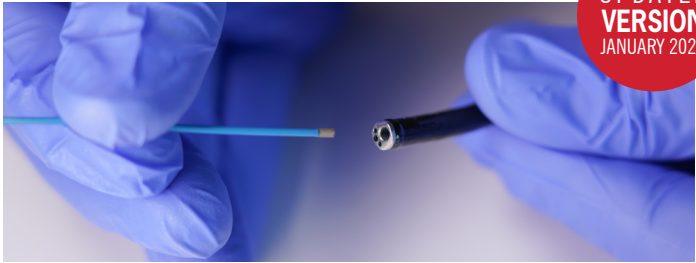


UPDATED
VERSION
JANUARY 2021



The VerifEye[®] Video Borescope

YOUR EYES ON THE INSIDE

Distributed by:

 **STERIS** *ims*
Instrument Management Services

steris-ims.com | 1.800.783.9251



The VerifEye[®] Video Borescope
YOUR EYES ON THE INSIDE



VerifEye®

YOUR EYES ON THE INSIDE

CHOOSE YOUR SET-UP

We have many configurations to choose from. Find the right one to fit your needs and order your video borescope and accessories today.



VerifEye® Video Borescope

Visual Inspection of your Medical Device & Instrument Channels

Bioburden build-up and damage can occur within the dark and difficult to reach spaces inside your equipment, but how do you see it?

The STERIS IMS VerifEye Video Borescope allows you to examine the full length of each lumen inside your endoscopes. High resolution visualization of previously inaccessible areas allows you to inspect for damage/residual bioburden and take necessary corrective action, if needed, before your next step.



The VerifEye Video Borescope is one of the tools you need to stay current per AAMI recommended practice changes.

Inspection using enhanced visualization tools such as lighted magnification and video borescopes might identify residues not observable by the unaided eye.

- AAMI ST79:2017

Features and Benefits:

- Works with any device/scope instrument channel greater than 1.6mm.
- Two-piece design, insertion tube and body is separate from the control unit. Designed for effective maintenance.
- Direct image display to a monitor via HDMI – no computer necessary.
- Still frame or video capture through USB 3.0 – a computer is needed.
- 1.2 meter length inspection unit is designed for ease of use inspecting shorter lumens. Can be used to inspect a flexible cystoscope channel in a single attempt.
- 1.9 meter inspection unit is designed for inspecting longer lumens such as colonoscopes in a single attempt.
- Scope unit is soakable for cleaning.
 - VEYE101-101/112 – VerifEye®
Inspection Unit IP rating: IPx7.
- Scope unit is compatible with STERIS V-PRO® Family of Low Temp Sterilization System.
- Scope unit is compatible with STERIS SYSTEM 1/1E® Liquid Chemical Sterilant Systems.
- One-year warranty on the inspection and camera control unit.

Distributed by:



Instrument Management Services

© 2017 Association for the Advancement of Medical Instrumentation ANSI/AAMI ST79:2017 49

WE AREN'T THE ONLY ONES TALKING ABOUT THE VERIFEYE VIDEO BORESCOPE...

ANSI/AAMI, AORN, IAHCMM, SGNA & CDC Guidelines on Visual Inspection Flexible Endoscopes

ANSI/AAMI ST91: 2015 Flexible and semi-rigid endoscope processing in health care facilities states in 12.4.2: *"Tools such as video borescopes of an appropriate dimension (length and diameter) may be used to visually inspect the internal channels of some medical devices."*

2017 Edition, AORN Guidelines for Perioperative Practices - Flexible Endoscopes Recommendations VII

"Flexible endoscopes accessories and associated equipment should be visually inspected for cleanliness, integrity, and function before use, during the procedure, after the procedure, after cleaning and before disinfection or sterilization."

- VII.c. *Lighted magnification should be used to inspect endoscopes and accessories for cleanliness and damage. 12.13. 65 [2: High Evidence] An endoscope that appears clean may harbor debris that cannot be seen without magnification. Lighted magnification may increase the ability to identify residual soil or damage.*
- VII.c.1. *Internal Channels of flexible endoscopes may be inspected using an endoscopic camera or borescope. [2: High evidence] Endoscopic cameras and borescopes penetrate the lumen and allow for improved visual inspection."*

IAHCMM Endoscope Reprocessing Manual, 2017

"The most important areas for inspection are the lumens that run through the endoscope. Lumens pose a cleaning challenge because of their narrow structure that prevents visualization during the cleaning; therefore, it is important to always check lumens for cleanliness after cleaning. Visual inspection of lumens can be accomplished using a borescope, a small flexible fiberoptic device that enables visualization of otherwise inaccessible areas within endoscope lumens."

<https://www.iahcmm.org/publications/endoscope-reprocessing.html>

SGNA's 2016 Standards of Infection Prevention in Reprocessing of Flexible Gastrointestinal Endoscopes states:

"Visual inspection is recommended to make sure the endoscope is visibly clean (AAMI, 2015; Rutala et al., 2008). It is not a guarantee that decontamination from manual cleaning is complete, but it can be considered a safety stop or "time out" to ensure the endoscope is visually clean before proceeding to the next step of HLD."

- a. *Visually inspect for conditions that could affect the disinfection process (e.g., cracks, corrosion, discoloration, retained debris) (FDA, 2009; AAMI, 2015).*
- b. *Use magnification and adequate lighting to help assist in visual inspection (AAMI, 2015).*
- c. *Repeat manual cleaning step(s) if not clean"*

The CDC Interim Protocol for Healthcare Facilities Regarding Surveillance for Bacterial Contamination of Duodenoscopes after Reprocessing, March 2015

"Inspection and manual cleaning: Ensure that the elevator mechanism located at the distal tip of the duodenoscope is thoroughly cleaned and free of all visible debris. The visible inspection is to be done with the elevator in the "open/raised" position as well as with the elevator in the "closed/lowered" position to ensure there is no visible debris above or below the elevator mechanism. Consideration should be given to use of a magnifying glass (e.g., 10x) to improve detection of residual debris around the elevator mechanism."

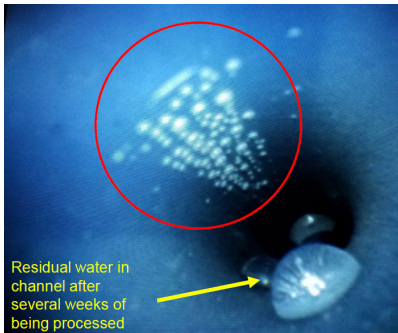
Essential Elements of a Reprocessing Program for Flexible Endoscopes – Recommendations of the Healthcare Infection Control Practices Advisory Committee CDC - June 28, 2017

Visual Inspection

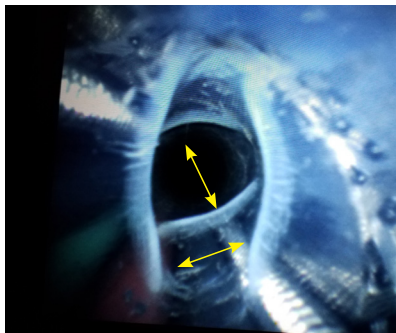
a) *After manual cleaning, visually inspect the endoscope and its accessories. Visual inspection provides additional assurance that the endoscope and its accessories are clean and free of defects. Complex devices such as flexible endoscopes may require the use of lighted magnification or additional methods to assist with the inspection process.*

DO YOU KNOW WHAT'S INSIDE YOUR CHANNEL?

The following pictures are of scopes "ready to use."



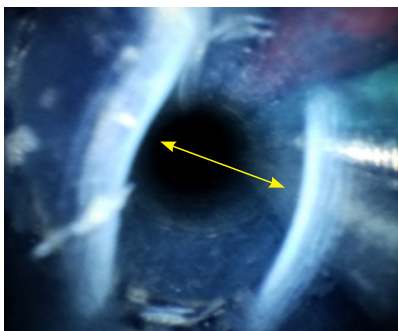
1. Residual water inside channel



2. Channel kinked in 2 directions at control body



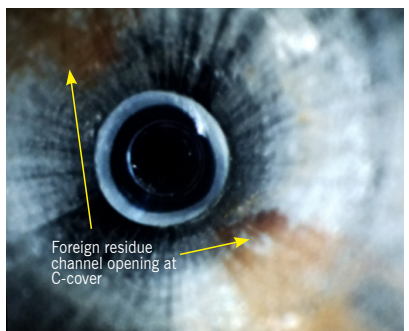
3. Cut or tear in channel



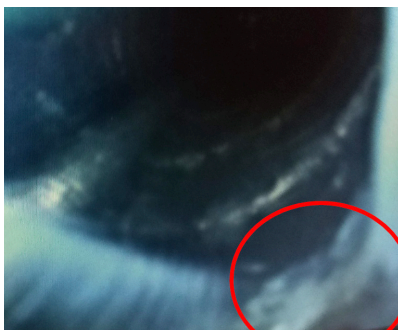
4. Kink at control body boot



5. Damaged channel at bending section (compressed)



6. Possible blood residue



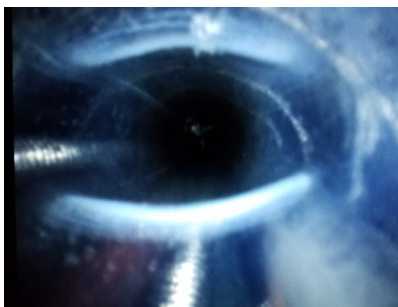
7. Possible bioburden lodged in crevice at kink



8. Possible bioburden in channel



9. Possible bioburden in channel



10. Kinked channel

VerifEye[®]
YOUR EYES ON THE INSIDE

CONTACT YOUR LOCAL STERIS ACCOUNT MANAGER

OR CALL 1.800.783.9251

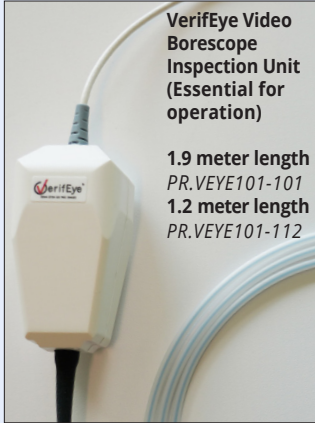
EMAIL: VERIFEYE@STERIS.COM

Distributed by:

STERIS *ims*
Instrument Management Services

VerifEye Video Borescope & Accessories

ESSENTIAL FOR OPERATION



VerifEye Video Borescope Inspection Unit (Essential for operation)

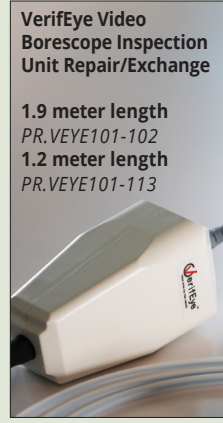
1.9 meter length
PR.VEYE101-101
1.2 meter length
PR.VEYE101-112



VerifEye Video Borescope Camera Control Unit (CCU) (Essential for operation)

PR.VEYE101-103

SERVICE



VerifEye Video Borescope Inspection Unit Repair/Exchange

1.9 meter length
PR.VEYE101-102
1.2 meter length
PR.VEYE101-113

MOUNTING SOLUTIONS



VerifEye Counter Top Stand with CCU, Inspection Unit, and Monitor Mount
PR.VEYE101-110



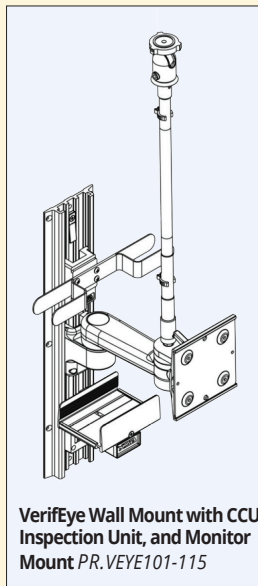
VerifEye Tablet Bracket Assembly (for use with stand or wall mount)
PR.VEYE101-111



Inspection Unit Camera Mount for Tabletop with Spring Loaded Clamp (2 Pack)
PR.VEYE101-108

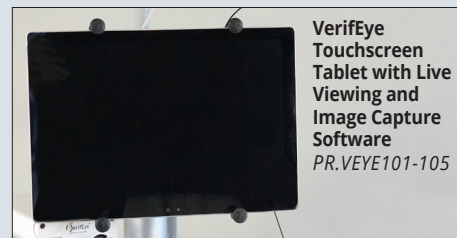


Inspection Unit Camera Mount for Tabletop Multi Mount With Screw Clamp
PR.VEYE101-109



VerifEye Wall Mount with CCU, Inspection Unit, and Monitor Mount
PR.VEYE101-115

DISPLAY SOLUTIONS



VerifEye Touchscreen Tablet with Live Viewing and Image Capture Software
PR.VEYE101-105



VerifEye 11.6 inch LED HD Display Monitor
PR.VEYE101-106

Distributed by:

CUSTOMIZED VERIFEYE® VIDEO BORESCOPE ORDER FORM

1.

CHOOSE YOUR SCOPE

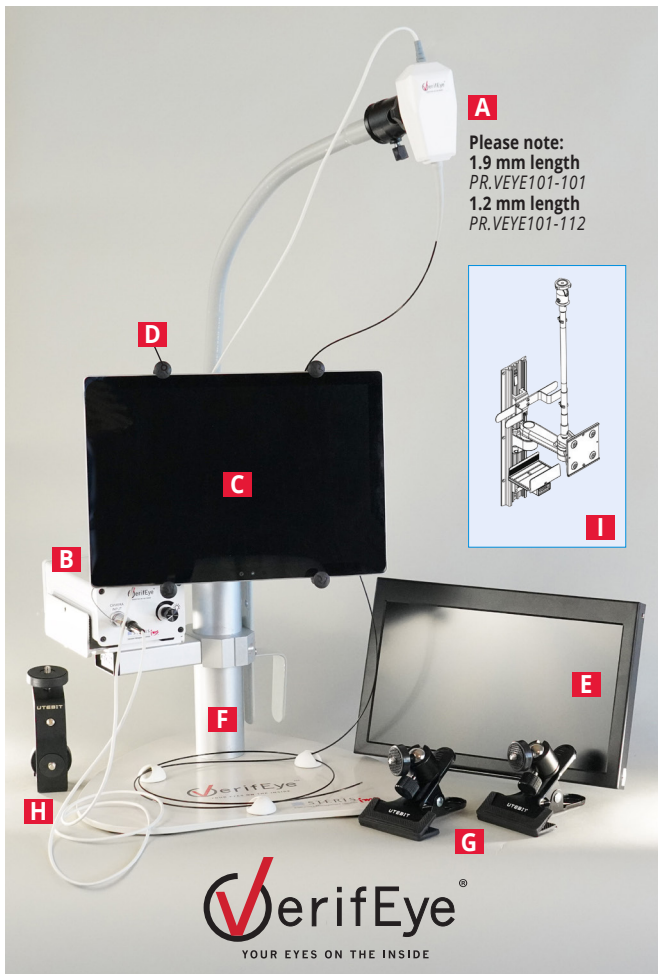
Camera Control Unit (CCU) and Inspection Unit
(Essential for operation) PR.VEYE101-101 PR.VEYE101-103

2.

CHOOSE YOUR ACCESSORIES

Check the box at the bottom of this form that indicates which accessory fits your needs.

Visual Inspection of your Medical Device & Instrument Channels



1. SCOPE ORDERING (ESSENTIAL FOR OPERATION):

A VerifEye Video Borescope Inspection Unit (Essential for operation)

1.9 meter length PR.VEYE101-101 1.2 meter length PR.VEYE101-112

B VerifEye Video Borescope Camera Control Unit (CCU) (Essential for operation)

PR.VEYE101-103

2. ACCESSORY ORDERING

Check Box	Display Solutions	Check Box	Mounting Solutions
<input type="checkbox"/>	C VerifEye Touchscreen Tablet with Live Viewing & Image Capture Software PR.VEYE101-105	<input type="checkbox"/>	D VerifEye Tablet Bracket Assembly (for use with stand or wall mount) PR.VEYE101-111
<input type="checkbox"/>	E VerifEye 11.6 inch LED HD Display Monitor PR.VEYE101-106	<input type="checkbox"/>	F VerifEye Counter Top Stand with CCU, Inspection Unit, & Monitor Mount PR.VEYE101-110

HOW TO ORDER

Please fill out the form with the accessories that fit your needs.

Call 800-783-9251 or email verifeye@steris.com with this completed form.

G Inspection Unit Camera Mount for Tabletop with Spring Loaded Clamp (2 Pack)
PR.VEYE101-108

H Inspection Unit Camera Mount for Tabletop Multi Mount With Screw Clamp
PR.VEYE101-109

I VerifEye Wall Mount with CCU, Inspection Unit, & Monitor Mount
PR.VEYE101-115



To view a product demonstration video scan this QR code.



Scan this QR code to download the VerifEye order form

PLEASE COMPLETE THE FORM BELOW

Account Name _____ Contact Name _____

Customer Acct. Number (STERIS IMS) _____ Phone Number _____

Fax Number _____ Email Address _____ PO Number _____


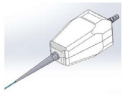
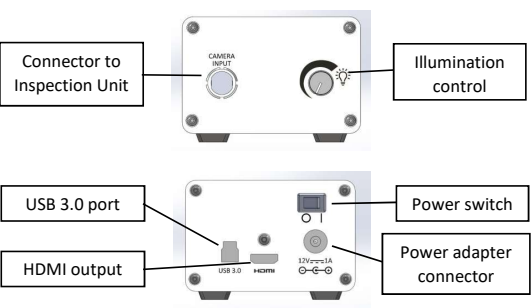
Shipping Address _____ City _____ State _____ Zip Code _____

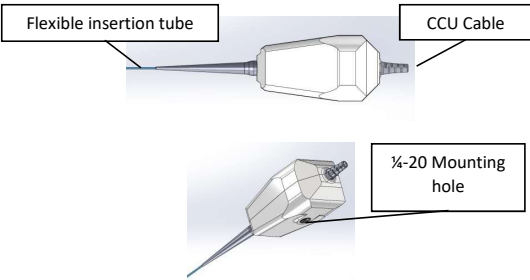

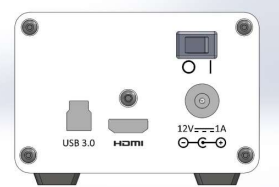

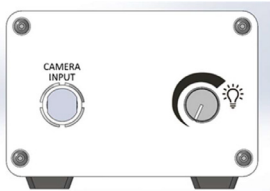
EMAIL THIS ORDER FORM TO YOUR STERIS IMS ACCOUNT MANAGER OR VERIFEYE@STERIS.COM



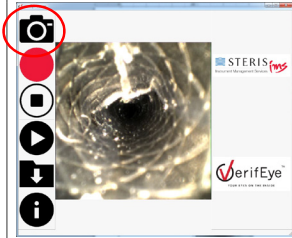
Distributed by:



Instructions for use:

Product Name	VerifEye® Camera Control Unit (CCU) and Inspection Unit
Type of product	Borescope system
Product numbers	<ul style="list-style-type: none"> • VEYE101-101– VerifEye® Inspection Unit • VEYE101-102– VerifEye® Inspection Unit (Brand New Repair/Exchange) • VEYE101-112– VerifEye® Inspection Unit 1.2m • VEYE101-113– VerifEye® Inspection Unit 1.2m (Brand New Repair/Exchange) • VEYE101-103– VerifEye® Camera Control Unit (CCU)
Intended use	Assist in visual inspection of medical device cannulas and lumens.
Range of applications	Medical instruments and devices that require visual inspection by providing illumination, magnification and optional documentation in channels and lumens that are not visible to the unaided eye.
Product Specifications	<p>Overall length of borescope:</p> <ul style="list-style-type: none"> • Working length: 1.9m (VEYE101-101, VEYE101-102), 1.2m (VEYE101-112, VEYE101-113) • Distal camera diameter: 1.6mm • Max Weight: Inspection Unit – 0.3125 lbs. (141.75 g), CCU – 1.3125 lbs. (595.34 g) • Resolution: 400 x 400 pixels • Brightness control: To increase or decrease illumination • Optical angle of view: 120 degrees • Connections: HDMI Out x 1, USB3.0 x 1, DC In x 1 • VEYE101-101, VEYE101-112 – VerifEye® Inspection Unit IP rating: IPx7 (protected against temporary immersion) • VEYE101-102, VEYE101-113 – VerifEye® Inspection Unit (New Repair/Exchange) IP rating: IPx7 (protected against temporary immersion) • VEYE101-103– VerifEye® Camera Control Unit (CCU) IP rating: IPx4 (protected against splashing water) • Image capture: Via USB3.0 and VerifEye® viewer • Video clip recording: Via USB3.0 and VerifEye® viewer
Package contents	<div style="display: flex; justify-content: space-around;"> <div style="text-align: center;"> <p>Camera Control Unit (CCU)</p>  </div> <div style="text-align: center;"> <p>Inspection Unit</p>  </div> </div> <ul style="list-style-type: none"> • Power Supply with interchangeable blades • Protective coil for Inspection Unit • HDMI Cable • USB 3.0 Cable 
Camera Control Unit Diagrams	 <p>Diagram labels:</p> <ul style="list-style-type: none"> Connector to Inspection Unit Camera Input Illumination control USB 3.0 port HDMI output Power switch Power adapter connector

Inspection Unit Diagrams	
Shipping and Storage	
Shipping requirements Storage requirements Packing conditions	Inspection Unit and CCU should be shipped in original packaging. -18 degrees C to 60 degrees C, 15% to 90% relative humidity. Inspection Unit and CCU should be packed in original foam packaging and protective coil. Protective coil is for shipping purposes and long-term storage only and not for use as a daily storage solution.
Instructions for Use	
Description of Use(s)	Assist in visual inspection of medical device cannulas and lumens.
Preparation for Use	Before connecting the Inspection Unit, verify that the VerifEye® viewer software is installed (if optional tablet was purchased) by clicking on Windows>All Programs>VerifEye. VerifEye® viewer software can only be installed on a tablet purchased from STERIS IMS. If the VerifEye® viewer software is not installed, contact STERIS IMS for support.
Inspection prior to use	Inspection of the <i>Inspection Unit</i> should be performed prior to each use. Inspect the Inspection Unit head for cracks. Inspect the <i>Inspection Unit</i> insertion tube for kinks and illumination performance. Inspect the video image by powering on the unit prior to insertion into the device that is being inspected. If any damage is noted to any part of the <i>Inspection Unit</i> , discontinue use immediately and contact STERIS IMS for service.
Operation	<ol style="list-style-type: none"> Mount the <i>Inspection Unit</i> onto a mounting fixture using the 1/4-20 mounting hole (if optional stand was purchased).  Connect the HDMI output from the CCU to an HDMI display (if using an HDMI monitor). Connect the USB3.0 from the CCU to a USB3.0 port on a Windows PC using a USB3.0 cable (if using the optional tablet and VerifEye® viewer software).  Connect the DC power input on the CCU to an AC power plug using the included power adapter. Remove the connector cable cap and connect the <i>Inspection Unit</i> to the CCU by inserting the metal connector on the <i>Inspection Unit</i> cable into the CCU Camera Input.   Power on the <i>Inspection Unit</i> by turning the power switch to the ON (I) position. Verify a live image is displayed on the HDMI monitor (if connected) or on the optional tablet using the VerifEye® software. Adjust the illumination level by rotating the brightness control knob (clockwise to increase illumination, counter clockwise to decrease illumination).

	<p>9. Grasp the <i>Inspection Unit</i> near the flexible distal end and gently insert into the intended device. Take care not to bend or kink the flexible distal portion.</p> 
<p>Operation for VerifEye® Touchscreen with Live Viewing software (tablet)</p>	<p>The following instructions apply to the optional tablet with the viewer software installed.</p> <ol style="list-style-type: none"> 1. Before launching the VerifEye® Viewer, check that all connections are properly connected. <ol style="list-style-type: none"> a. Power adapter to tablet b. USB 3.0 cable between CCU and tablet 2. Power on the tablet by pressing the tablet On/Off button. 3. Sign on to the Steris login by clicking Sign In. 4. The CCU MUST be turned on prior to launching the VerifEye® Viewer software on the tablet. <ol style="list-style-type: none"> a. Launch the Viewer by double clicking on the VerifEye® Viewer icon on the desktop. b. Always launch the VerifEye® viewer AFTER the CCU has been powered ON. If the CCU is powered off at any time while the viewer software is still open, close the VerifEye® viewer then relaunch it after the CCU has been powered ON. c. VerifEye® viewer may require several seconds to launch. Double click the desktop icon one time only. d. If VerifEye® viewer closes, relaunch it by double clicking the desktop icon. e. If connectivity issues persist, reboot the tablet and repeat steps a-d above. 5. The live camera image will appear in the viewing window of the software. 6. To change the default directory for saving images and video clips, click the Folder button in the viewer software.  <p>7. To capture an image, click the Snapshot button.</p> 

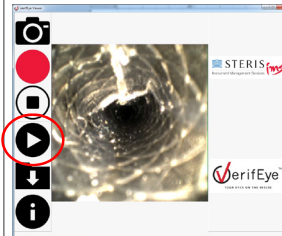
8. To capture a video clip, click the **Record** button.



9. To stop recording, click the **Stop Record** button.

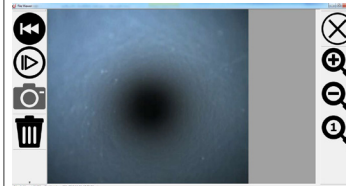


10. To play back recorded video, click the **Play** button.




11. After clicking the play back window, select the video file you want to playback.

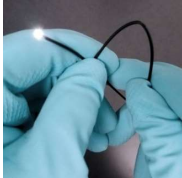

12. The playback window will open.



13. The playback window has several controls including:

- a. Rewind
- b. Slow motion mode
- c. Snapshot
- d. Delete file
- e. Previous file
- f. Close
- g. Zoom in
- h. Zoom out
- i. Zoom 1:1

Cleaning and Maintenance	
Cleaning	Regarding the cleaning and disinfection of the VerifEye® Video Borescope Inspection Unit (VEYE101- 101/VEYE101-102/VEYE101-112/VEYE101-113) the VerifEye® Video CCU (VEYE101-103) and related accessories, it is up to the end user to determine when to clean, disinfect and/or do both based on the facility's protocol.
VEYE101-101/102/112/113– VerifEye® Inspection Unit	Wipe off any gross soil and wipe down with enzymatic solution, such as Prolystica® HP Neutral or Prolystica® 2X Concentrate Neutral Detergents, after every use. Rinse under clean water. The Inspection Unit can be submerged with the secure cap. Inspection Unit IP rating: IPx7 (protected against temporary immersion). Follow the disinfectant manufacturers IFU for use with scopes. Dry with clean, lint-free towel. 
VEYE101-103– VerifEye® Camera Control Unit (CCU)	Wipe down with moist antibacterial wipes according to OEM IFU for contact time. DO NOT submerge this unit. Dry with clean, lint-free towel. CCU IP rating: IPx4 (protected against splashing water)
Tablet	The tablet can be sanitized by using one of the following recommended solutions—PDI Sani-Cloth Plus, CaviWipes, Covidien Alcohol Prep Pads, any similar wipes with IPA (Isopropyl Alcohol) solution under 70%, Total Solutions Full Spectrum Disinfectant Wipes, or Clorox Healthcare Bleach Germicidal Wipes—without risk of damaging the device.
HDMI Cable	Wipe down with moist antibacterial wipes according to OEM IFU for contact time, paying careful attention not to get the cable contacts wet. DO NOT submerge this unit. Dry with clean, lint-free towel.
USB3.0 Cable	Wipe down with moist antibacterial wipes according to OEM IFU for contact time, paying careful attention not to get the cable contacts wet. DO NOT submerge this unit. Dry with clean, lint-free towel.
Power adapter	Wipe down with moist antibacterial wipes according to OEM IFU for contact time, paying careful attention not to get the cable contacts wet. DO NOT submerge this unit. Dry with clean, lint-free towel.
Stand	Wipe down with moist antibacterial wipes according to OEM IFU for contact time. Dry with clean, lint-free towel.
Disinfection of VEYE101-101/102/112/113– VerifEye® Inspection Unit	Wipe down with moist antibacterial wipes according to OEM IFU for contact time. The <i>Inspection Unit</i> can be submerged with the secure cap. Inspection Unit IP rating: IPx7 (protected against temporary immersion). Follow the disinfectant manufacturers IFU for use with scopes. Dry with clean, lint-free towel.
Sterilization of VEYE101-101/102/112/113– VerifEye® Inspection Unit	Validated for compatibility with: <ul style="list-style-type: none"> • STERIS V-PRO® 1 Standard Cycle • STERIS V-PRO® 1 Plus Lumen and Non-Lumen Cycles; • STERIS V-PRO® maX Lumen/Non-Lumen/Flexible Cycles • STERIS V-PRO® maX2 Lumen/Non-Lumen/Flexible/Fast Non-Lumen Cycles • STERIS V-PRO® 60 Lumen/Non-Lumen/Flexible Cycles • STERIS V-PRO® s2 Lumen/Non-Lumen/Flexible/Fast Cycles Validated for compatibility with: <ul style="list-style-type: none"> • STERIS SYSTEM 1E® Liquid Chemical Sterilant Processing System • STERIS SYSTEM 1® endo Liquid Chemical Sterilant Processing System Follow the OEM IFU for sterilization settings and cycle time.

Disinfection of VEYE101-103– VerifEye® Camera Control Unit (CCU)	Wipe down with moist antibacterial wipes according to OEM IFU for contact time. DO NOT submerge this unit. Dry with clean, lint-free towel.
Maintenance	The VerifEye® Camera Control Unit (CCU) and Inspection Unit and all components are designed as non-user serviceable parts and components. For service, please contact your STERIS IMS representative or call 800-783-9251.
Storage	Store the VerifEye® Camera Control Unit (CCU) and Inspection Unit in a dry environment with a temperature of no higher than 60 degrees C or no lower than -20 degrees C. Store the Inspection Unit loosely coiled in the designated storage container or in a way that the insertion portion won't be damaged.
Special Warnings and Cautions	<p>Do not modify or disassemble the unit. Do not subject the distal end of the Inspection Unit to impact or bending, which may cause damage to the CMOS camera located at the distal tip. Do not tightly coil or kink the insertion portion of the unit.</p>  <p>Do not allow the CCU to come in contact with excessive amount of water. This may cause damage to the CCU or electrical shock. CCU IP rating: IPx4 (protected against splashing water). Do not set any equipment on the Inspection Unit.</p> 
FCC information	This device complies with part 15 of the FCC Rules. Operation is subject to the following two conditions: (1) This device may not cause harmful interference, and (2) this device must accept any interference received, including interference that may cause undesired operation.
CE	VerifEye® Camera Control Unit (CCU) and Inspection Unit is CE Marked
Service	For service, please contact your STERIS IMS representative, call 800-783-9251, or email VerifEye@steris.com .
Warranty	The VEYE101-101/102/112/113– VerifEye® Inspection Unit carries a 365-day warranty against defects for parts and labor. The VEYE101-103– VerifEye® Camera Control Unit (CCU) carries a 365-day warranty against defects for parts and labor.
Lifetime	The lifetime of VerifEye® Camera Control Unit (CCU) and Inspection Unit is determined by their adequate functionality and careful care during use. End of lifetime is determined by wear and damage due to the use. Improperly functioning, damaged, or excessively worn VerifEye® Camera Control Unit (CCU) and <i>Inspection Unit</i> should not be used.
VerifEye® Camera Control Unit (CCU) and Inspection Unit are distributed by STERIS IMS. VerifEye® is a trademark of STERIS Instrument Management Services (IMS). Prolystica is a registered trademark of STERIS Corporation.	

The VerifEye[®] Video Borescope

YOUR EYES ON THE INSIDE



Distributed by:



steris-ims.com | 1.800.783.9251