



Gregory L. Lof, PhD, CCC-SLP



ASHA Fellow
Professor Emerita
Department of Communication Sciences and Disorders
MGH Institute of Health Professions
Boston, Massachusetts

Alex F. Johnson, PhD, CCC-SLP



ASHA Fellow; ASHA Honors
Provost and Vice President for Academic Affairs
Professor
Department of Communication Sciences and Disorders
MGH Institute of Health Professions
Boston, Massachusetts

Jean Andruski, PhD



Associate Professor (Retired)
Department of Communication Sciences and Disorders
Wayne State University
Detroit, Michigan

Cara Bryan, MA, CCC-SLP



Founder
South Tampa Voice Therapy
Tampa, Florida

Derek E. Daniels, PhD, CCC-SLP



Associate Professor
Department of Communication Sciences and Disorders
Wayne State University
Detroit, Michigan

Mark DeRuiter, MBA, PhD, CCC-A/SLP

ASHA Fellow; National Academies of Practice Fellow
Director of Doctor of Clinical Science in SLP



Department of Communication Science and Disorders
University of Pittsburgh
Pittsburgh, Pennsylvania

Sandra Laing Gillam, PhD, CCC-SLP



ASHA Fellow
Professor
Department of Communicative Disorders and Deaf
Education
Utah State University
Logan, Utah

Margaret Greenwald, PhD, CCC-SLP



Associate Professor
Department of Communication Sciences and Disorders
Wayne State University
Detroit, Michigan

Donald M. Goldberg, PhD, CCC-A/SLP



ASHA Fellow; American Academy of Audiology Fellow
Professor
Department of Communication Sciences and Disorders
College of Wooster
Wooster, Ohio
Professional Staff, Section of Allied Hearing, Speech and
Balance Services
Head and Neck Institute
Cleveland Clinic Lerner College of Medicine of Case
Western Reserve University
Cleveland, Ohio

Michelle Gutman, PhD, CCC-SLP



Clinical Professor
Department of Speech, Language and Hearing Sciences
Purdue University
West Lafayette, Indiana



Charles Haynes, EdD, CCC-SLP



Professor
Department of Communication Sciences and Disorders
MGH Institute of Health Professions
Boston, Massachusetts

**R. Jordan Hazelwood, PhD, CCC-SLP,
BCS-S, CCRE**



Assistant Professor
Department of Communication Sciences and Disorders
Appalachian State University
Boone, North Carolina

James T. Heaton, PhD



Adjunct Professor
Department of Communication Sciences and Disorders
MGH Institute of Health Professions
Boston, Massachusetts
Associate Professor
Harvard Medical School, Department of Surgery
Massachusetts General Hospital
Boston, Massachusetts

Pamela Hook, PhD



Professor Emerita
Department of Communication Sciences and Disorders
MGH Institute of Health Professions
Boston, Massachusetts

Melanie W. Hudson, MA, CCC-SLP

ASHA Fellow; National Academies of Practice Fellow



National Director
EBS Healthcare
West Chester, Pennsylvania

Samantha E. Jordan, MS, CCC-SLP



Speech-Language Pathologist
Kevin G. Langan School
Albany, New York

Ann W. Kummer, PhD, CCC-SLP



ASHA Fellow; ASHA Honors
Senior Director (Retired)
Division of Speech-Language Pathology
Cincinnati Children's Hospital Medical Center
Professor of Otolaryngology and Clinical Pediatrics
University of Cincinnati College of Medicine
Cincinnati, Ohio

Kimberly A. Murphy, PhD, CCC-SLP



Assistant Professor
Communication Disorders and Special Education
Old Dominion University
Norfolk, Virginia

Nancy Naperala, PhD, CCC-SLP

Instructor
Department of Communication Sciences and Disorders
Wayne State University
Detroit, Michigan



Craig W. Newman, PhD, CCC-A



ASHA Fellow
Section Head of Allied Hearing, Speech, and Balance Services and
Vice Chair of Head and Neck Institute (Retired)
Cleveland Clinic Lerner College of Medicine of Case Western Reserve University
Cleveland, Ohio

Marjorie Nicholas, PhD, CCC-SLP



ASHA Fellow
Professor and Chair
Department of Communication Sciences and Disorders
MGH Institute of Health Professions
Boston, Massachusetts

Gail Richard, PhD, CCC-SLP



ASHA Fellow
Professor Emerita
Department of Communication Sciences and Disorders
Eastern Illinois University
Charleston, Illinois

Sharon A. Sandridge, PhD, CCC-A



ASHA Fellow
Section Head, Allied Hearing, Speech and Balance Services
Co-Director, Tinnitus Management Clinic and Audiology Research Laboratory
Cleveland Clinic Lerner College of Medicine of Case Western Reserve University
Cleveland, Ohio

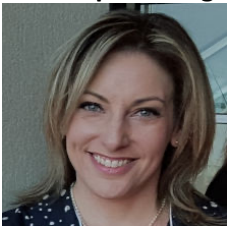
Reed Senter, MS, CCC-SLP

Doctoral Student
Special Education & Disability Policy
Virginia Commonwealth University



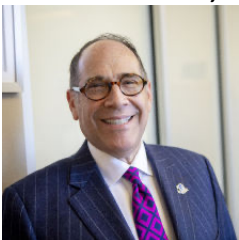
Richmond, Virginia

Nina Capone Singleton, PhD, CCC-SLP



Associate Professor
Department of Speech-Language Pathology
Seton Hall University
Associate Professor of Pediatrics
Hackensack Meridian School of Medicine
Nutley, New Jersey

Brian B. Shulman, PhD, CCC-SLP



ASHA Fellow; National Academies of Practice Fellow;
Association of Schools Advancing Health Professions
Fellow
Dean
School of Health and Medical Sciences
Professor
Department of Speech-Language Pathology
Seton Hall University
Nutley, New Jersey

Zachary M. Smith, MS, CCC-SLP



Speech-Language Pathologist
Speech & Swallow Department
Brigham and Women's Hospital
Boston, Massachusetts

Barbara C Sonies, PhD, CCC-SLP, BCS-S



ASHA Fellow; ASHA Honors
Professor Emeritus
Department of Hearing and Speech Disorders
University of Maryland
College Park, Maryland
Chief (Retired)
Speech Language Pathology and Oral Motor Function
Laboratory (Retired)
Department of Rehabilitation Medicine
National Institutes of Health
Bethesda, Maryland



Greg Turner, PhD, CCC-SLP



Professor
Communication Disorders Program
School of Human Services
Harmon College of Business and Professional Studies
University of Central Missouri
Warrensburg, Missouri

Sofia Vallila-Rohter, PhD, CCC-SLP



Associate Professor
Department of Communication Sciences and Disorders
MGH Institute of Health Professions
Boston, Massachusetts
SLP Concentration Chair
Speech and Hearing Bioscience and Technology Program
Harvard University
Cambridge, Massachusetts

Maggie Watson, PhD, CCC-SLP



Professor (Retired)
Department of Communicative Disorders
University of Wisconsin, Stevens Point
Stevens Point, Wisconsin

Margaret Wilson, MA, CCC-SLP

Speech-Language Pathologist III
Cincinnati Children's Hospital Medical Center
Cincinnati, Ohio

Aaron Ziegler, PhD, CCC-SLP

Co-Director
The Wellness Group for Voice, Speech and Swallowing
Portland, Oregon

