



Hillrom™

# Welch Allyn® PanOptic™ Ophthalmoscopes

## EXPAND YOUR VIEW

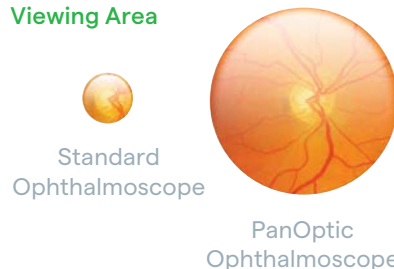
Our Welch Allyn PanOptic and PanOptic Plus Ophthalmoscopes offer a brighter, wider view. Enhance eye exams with the PanOptic Plus, featuring Quick Eye alignment technology that supports better alignment to the optic disc, a common challenge with eye exams. Both devices work on existing Welch Allyn 3.5 V power handles and wall systems.

Quick Eye™ alignment features two indicator lights that help you direct the patient's gaze for better optic disc alignment.



Specifications	PanOptic Plus Ophthalmoscope	PanOptic Basic Ophthalmoscope
Model Number	118-3	118-2
QuickEye™ Alignment Technology	Yes	No
Warranty	5 years	1 year
Height x Width x Depth	8 cm x 4.5 cm x 7.5 cm	
Weight	130 g	
Apertures	Small, Large, Red Free, Slit, Fixation target, Cobalt Blue	
Diopter Range	-20 to +25 D	
Diopter Steps	-20, -15, -12, -10, -9, -8, -7, -6, -5, -4, -3, -2, -1, 0, 1, 2, 3, 4, 5, 6, 7, 8, 9, 10, 12, 15, 20, 25	
Crossed-linear Polarizers	Yes	
Lamp Type and Warranty	SureColor™ LED, 7 year warranty	
Color	Color rendering index (CRI): 95 typical; R9: 85 typical; Color temperature: 2700K - 3500K	
Lamp Life	80+ years <sup>1</sup> (typical)	
Field of view	20°	

**20X LARGER**  
Viewing Area



Standard Ophthalmoscope

PanOptic Ophthalmoscope

Specifications	Welch Allyn® Lithium Ion Plus Power Handle with USB Charger	Welch Allyn® Universal Desk Charger
Model Number	719-3	719-DSK
Height x Width X Depth	14 cm x 3 cm x 3 cm	10 cm x 19 cm x 11 cm
Weight	140 grams	660 grams
Compatibility	719-DSK Welch Allyn® Universal Desk Charger; 71140 chargers	71140, 719-3, 71910, 71670 handles. 12800 & 22800 used with 71249 Adapter Sleeve
Integrated Charging	USB-C	—
Warranty	Two years	One year
On-time	5.5 hours; Approximately 660 30-second exams	—
Battery Type	Lithium Ion	—
USB Quick-charge time (0-75%)	90 minutes	—
Power Cord and Cord Options	719-USB	#18 AWG, 3-wire grounded cord, 6 feet long medical grade detachable with IEC60320 inlet
Input	—	100-240V, 50-60 Hz, 100mA max, Class I, Continuous Operation
Output	—	2.4V - 4.0V DC 80mA max

## PANOPTIC ACCESSORIES

### 118-EC

Reusable Eyecup (set of five)

### 777-LH

3.5 V Head Locking Hardware with setscrews



For more information, please contact your Hillrom representative or visit [hillrom.com](http://hillrom.com).

**hillrom.com**

Hill-Rom reserves the right to make changes without notice in design, specifications and models. The only warranty Hill-Rom makes is the express written warranty extended on the sale or rental of its products.

<sup>1</sup> Assumes an average of 4 patient exams (both eyes) per day taking 15 seconds per eye for 200 days per year.

© 2021 Welch Allyn, Inc. ALL RIGHTS RESERVED. APR205302 Rev 1 9-APR-2021 ENG – US